

Newsletter

Tabs *FM*

May/June 2008

Ladies and Gentlemen,

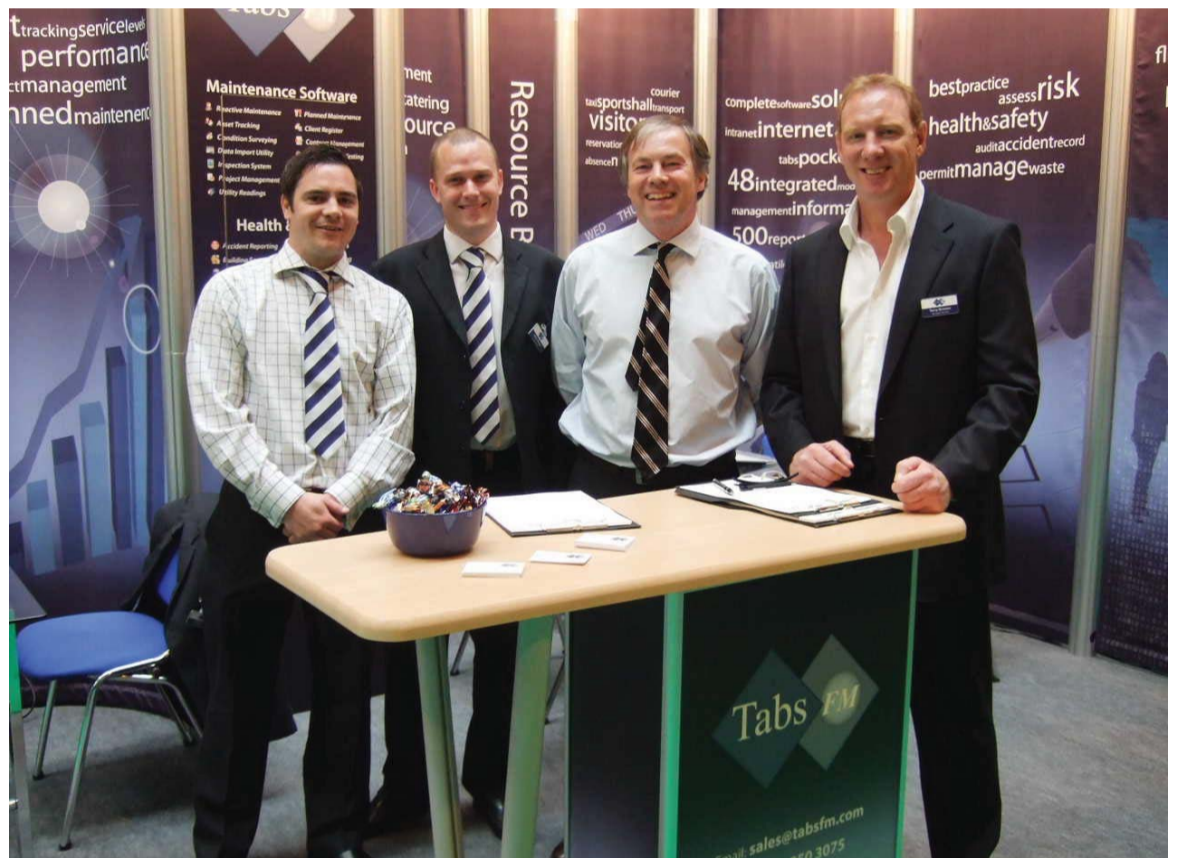
Welcome to the third Newsletter of 2008. Are we growing older or are the months getting shorter? I guess time goes quickly when you're busy and having fun.

It has certainly been hectic in the Tabs office of late and we would like to share with you one or two snippets of information which may prove interesting...

Tabs at The NEC Facilities Show...

We enjoyed a great time at The NEC in May. The dynamics of a big trade show are really interesting from an exhibitor's viewpoint. Apart from the important elements i.e. the business context, the observation of and communication with so many diverse people has the makings of at least 6 more episodes of The Office. I will try to secure the services of Ricky Gervais for our next show. There is plenty of material to work with. I'm sure anyone who has worked in a similar environment will know what I mean.

What was extremely satisfying was the reception we found when showing the latest Tabs System to the many visitors to Stand E31. It has certainly created a lot of work for us over the summer months as the Tabs name becomes more and more familiar in the Facilities/Estates and Services worlds. Thanks to all who came to see us at the show. We will let you have information on The Total Workforce Show in London later in the year



A new service from Tabs...

Following interesting feedback from our Forum Day in March, we now offer a service for remote upgrades rather than visiting you on site. We are planning four upgrades per year at a fixed cost which will ensure you have the latest version of the system at all times and will be less expensive than one or two upgrades using site visits.

Following the upgrade two PDF reports will be emailed to you. These will provide you with technical information on changes to the database structures and also a complete list of enhancements to the existing system.

If you would like further information on this service, please contact sales@tabsfm.com.

"Be an opener of doors" Ralph Waldo Emerson

Tabs *FM*

Tel: **0870 850 3075**
Email: **sales@tabsfm.com**

Fax: **0208 312 7778**
Web: **www.tabsfm.com**

Newsletter

Tabs *FM*

May/June 2008

Tabs .NET developments...

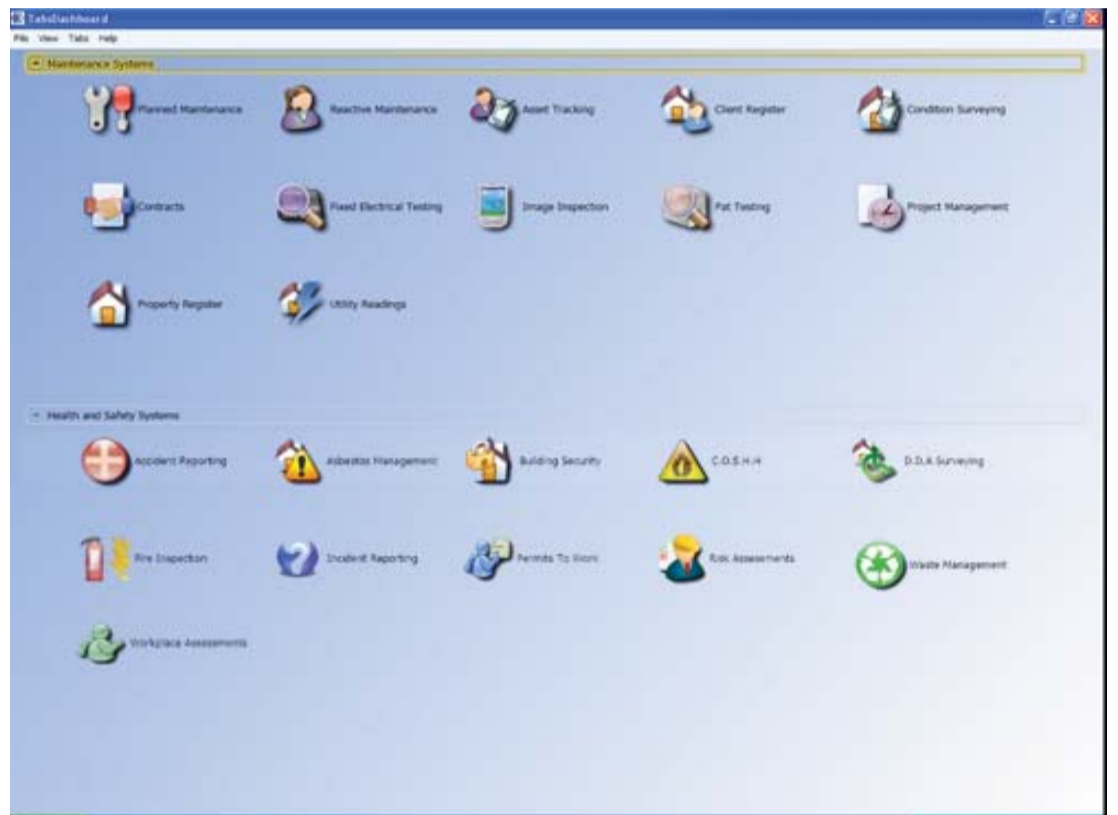
As many of our existing clients know, Tabs is being re-written in a .NET format. Once completed, this will be a real benefit for our development team and, of course, our users. One or two modules are already complete and those clients who have had a sneak preview really like the look of the new system. It's clean, crisp and minimalist appearance give a fresh look to the system but below the simpler look, all the depth and power of Tabs modules nestle, waiting to be clicked into life.

Transition to the new version will be as smooth as the new façade. We will keep you posted!

Vertical text: Tabs For Pocket PC



Vertical text: Management Information System



New Pocket PC system for Tabs...

We promised it for mid May. It's late but fashionably so.

The new version of Tabs for pocket PC is literally about to be unveiled to the Tabs team during the first week of June.

This .NET version is an intuitive, robust and secure version of our software for mobile devices. Again, the screen takes on a modern, simplistic look but gives more options and greater control. With increasing numbers of clients demanding mobile solutions, this delivery has been worth waiting for. After an intense period of testing in house and with a current client, this package will be available during June 2008.

Please contact us to register your interest.

New Tabs Clients...

We are pleased to have welcomed the following clients during past few months

Lincolnshire Shared Services, NHS
Gloucester County Cricket Club
Compucredit
Celtic Football Club
Harrison Electrical Services
City of Wolverhampton College
UCAS
Telecom Services
Flagship Training Limited
Bedales School

"Can I have another go?" John Terry

Tabs *FM*

Tel: **0870 850 3075**
Email: **sales@tabsfm.com**

Fax: **0208 312 7778**
Web: **www.tabsfm.com**