

February/March 2009

Welcome to the first edition of the 2009 Tabs FM newsletter. We hope you had a safe and happy holiday season. Many people start the New Year with a fresh perspective, Tabs are by no means different. We have been extremely busy planning an exciting 2009, ensuring that the content of this newsletter is bursting with interesting information. So let's get stuck in....

Push-to-Talk Integration

Tabs FM welcomes you to the 'Push-to-talk Integration Launch' at Wembley Stadium. This project has been steadily gathering pace over the past few months. Our development team has been planning/developing the integration of the Push-to-Talk service into our existing Tabs for Pocket PC software solution. There is a great buzz surrounding the project which we hope will eradicate the use of two-way radios and also provide GPS positioning. Invitations have been dispatched for the event, and places are already filling up, leaving limited availability. To reserve your place, please contact us on 0844 556 0488 or sales@tabsfm.com. We look forward to hearing from you soon.

New Employees

In addition to the arrival of Sunita Chudasama (Training Manager), we would also like to introduce Liam Ellis ('The Apprentice') to the Tabs fold. Joining us as part of our growing consultancy team, Liam will soon be performing upgrades and new installations. We are keen to develop Liam's knowledge in the IT arena, putting him through his paces, Alan Sugar style...well perhaps not quite that dictatorial!

Tabs Training

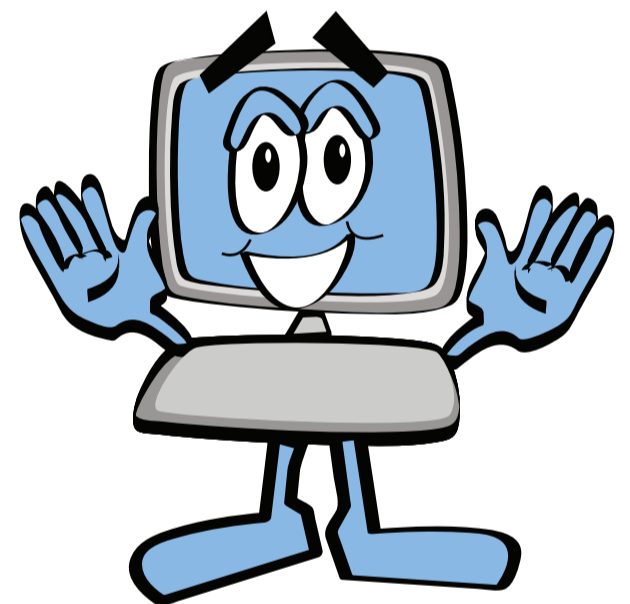
Some clients may already have met our new Training Manager. Originating from a maintenance background with several years Tabs experience, Sunita Chudasama will be revitalising our current Training Procedures throughout 2009.

Faced with the task of delivering tailored training programmes to suit your business processes by consulting and planning training agendas with clients prior to the training sessions, Sunita is already proving to be a valuable asset to Tabs FM.

Over the next few months, Sunita will be producing Training Guides to support the Tabs application. With excellent progress already made on user guides for both the Reactive Maintenance and Conference Room Booking Systems, those who have already attended a course and been provided with supporting documentation. This information has been received positively and proven a beneficial aid in supporting Tabs system.

At this juncture, it is appropriate to introduce 'TABBY' your Tabs Training Buddy. Tabby will be appearing throughout future documentation offering expert tips and training exercises on the Tabs application. We're sure you will find our cheeky character a friendly assistant to Tabs training.

This year, we plan to host group training events throughout the UK. At a reduced rate, courses will be offered to all clients focusing on specific modules and their functionality. These events will not be restricted to individual clients, creating a great networking opportunity for all attendees.



Development History

Towards the end of 2008 we introduced a new internal process to record development changes across all our applications. Previous systems were in place, but were on an individual system basis. Moving forward throughout 2009 all new development will be centrally recorded allowing us to print, at any point, a full development history report outlining all new developments and patches. Prior to any upgrade or on request, this report can be generated and emailed to provide and highlight the benefits of an upgrade. The report is logically grouped by System (i.e. Pocket PC, Intranet or Client Installation) and then module, to clearly identify modifications. If you would like a copy of the development report, please contact the support desk on 0844 556 0488 or email support@tabsfm.com

"Arriving at one point is the starting point to another" John Dewey

System Health Check

We are constantly exploring ways to make our service more efficient for our client base. When looking at most time management models, we realise that "putting out fires" is a time consuming and often stressful activity.

Tabs Systems are constantly under development as we endeavour to offer new technology and fresh ideas for the benefit of all users.

We would like to suggest a 6 monthly Health Check for all clients. This would involve a pre-arranged site visit to carry out a review of your employment of Tabs Systems. We can bring you up to speed with new development and also address any other areas of need e.g. training, re-training, wish lists and any gripes/issues you may have with your system. It is a great opportunity to look at internal processes with a view to generating more efficient options. If you would like to subscribe to our pro-active health service, please register your interest as soon as possible. We can then arrange dates for 2009 in advance.

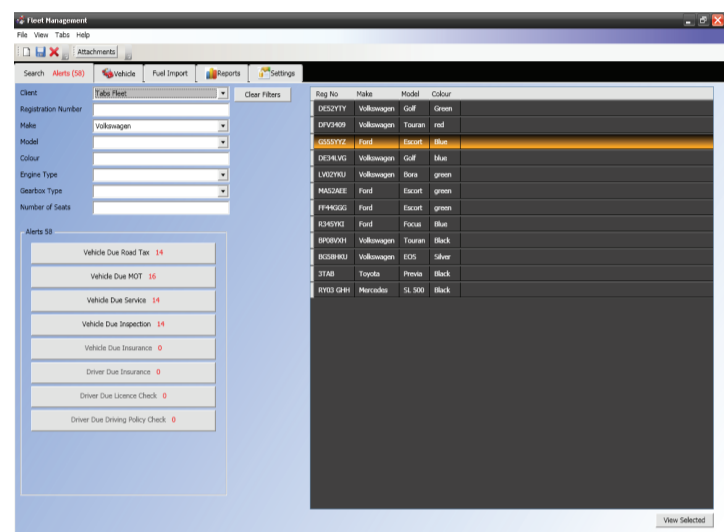
New Clients

We warmly welcome:

Akaria Investment Ltd
Argent FM
Elmbridge Borough Council
SandpiperCI
CSM
CD Hood
Royal Albert Hall
Sommerfield

.Net Stores System

As part of our ever growing arsenal of redeveloped modules, we feel it is an appropriate time to introduce the new Tabs Stores System. Released as a beta version and assigned for testing, our in house testing team are in the process of methodically reviewing the module. Any enhancements highlighted will be reviewed and developed into the latest release. The new release is based on the original version and utilises the same table structure, with no loss of data. Taking into consideration clients requests for enhancements at pre-development meetings, your thoughts and suggestions have been incorporated into the new release ensuring a powerful system for the future. The expected release date set for this system is programmed for the end of March. If you are interested in a demonstration, please contact us.



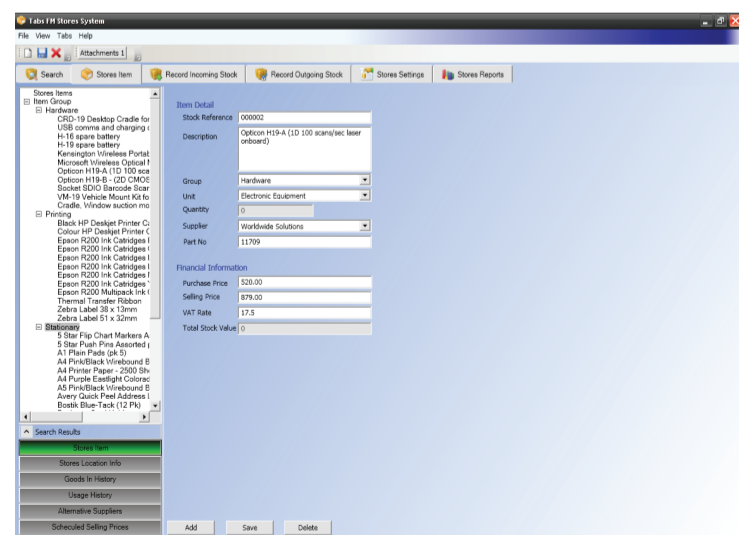
.Net Fleet Management

In addition to the new Stores System, our development team has been flat out re-engineering the Fleet Management system. Fuelled, by creative freedom and a flexible approach, our developers exhausted their resources and come up with a Rolls Royce of a module assuring a smooth ride for the future.

The new version has evolved considerably since the original prototype and now incorporates a collapsible tree structure to easily navigate and flip between records. With no brakes applied, the system has also been tuned-up to embrace import abilities for fuel usage direct from a CSV file. This allows statistical reports to be generated based on fuel consumption and vehicle running costs.

The system boasts the addition of new fields for further data capture and also a mini restructuring of existing records to simplify and limit stored data.

Test drives will be available soon. Ensure a fast track to Fleet Management in affordable style.



"I'm not offended by all the dumb blonde jokes because I know I'm not dumb... and I also know that I'm not blonde" Dolly Parton